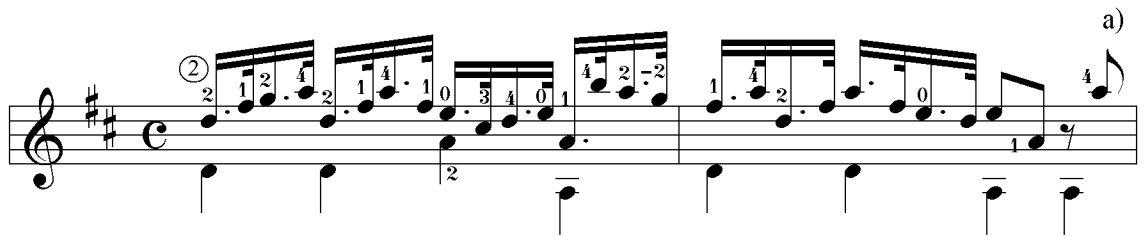
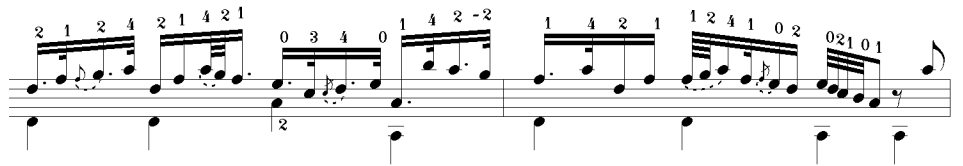


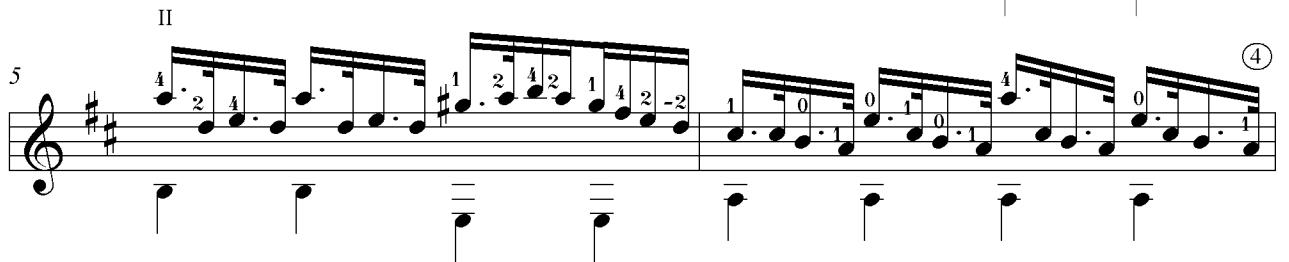
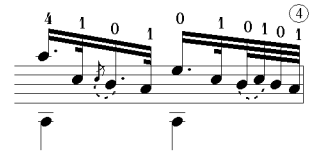
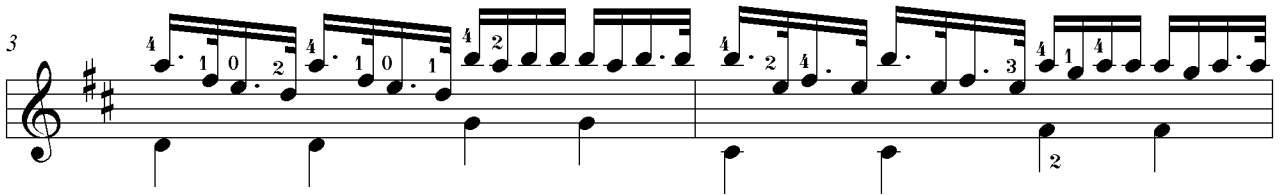


## II

Largo (♩ = 66 ca.)



## IV



## III

Allegro (♩.=132 ca.)

$\frac{1}{2}$  V  
*tutti* i a m i a m m i a m  
*f*

4  
*f*

7  
*solo* i p m i p m i  
*mf*

10  
 m i a m i a m i a m i a  
*ossia* ( 0 1 0 1 0 2 4 2 4 2 )  
 ②